



Testori | 120°

FABRICS SINCE 1904



Manifattura Testori: History and numbers

Founded in **1904** near Milan, **Manifattura Testori** has brought to life many ambitious and important projects, taking Italian taste and craftsmanship around the world right from the beginning of the 20th century.

In the historical site of Novate Milanese, still today the operating headquarter of the Company, in the first decades of the past century, production concentrated on fabrics for interior furnishings and, later, on those for **railways** and **cruise ships**.

Then, between the **1950s** and **1960s**, Testori began working also with the **aviation** sector, firstly with Air France and Alitalia and later with the other world leading airlines.

OUR NUMBERS



50%
Export Quota



51
Presence
in countries



330.000
metres of fabric
capacity per year



100%
Made in Italy



> 9.000
articles



0 to 7
Lead time weeks

MAIN KEY FEATURES



The entry into the marine market was a significant turning point for the Company, directing it increasingly towards a **cross-sectorial R&D approach** for high technological contents products **for the Transportation industry** (cruise ships, aircrafts, trains and buses).

This ability to cultivate **innovation**, while maintaining the traditional values of “**made in Italy**”, has always been the specific target of Manifattura Testori **Design department** that constantly creates new collections for the various application sectors as well as **custom made** products on request.

PRODUCTS AND SERVICES

Manifattura Testori supplies a vast range of products including fabrics for upholstery, curtains, headboards, bed skirts, bed runners as well as wall coverings and wall carpets.

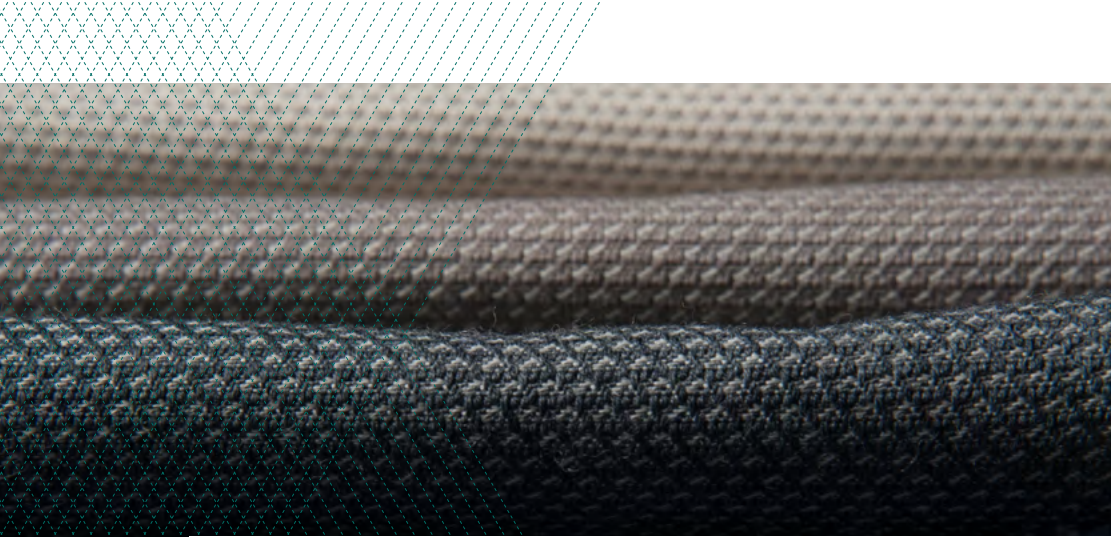


Periodically we present to Cruise Lines and Yards the latest products technical features such as durability, light weight, machine washability, stain and oil repellency, antimicrobial and antiviral and sustainability characteristics.



Testori full-equipped internal technological laboratory, in addition to the main physical-mechanical and chemical tests, carries out fire resistance tests to certify textiles and assembled products (aviation Oil Burner Test) as a 3rd party laboratory service.





Our Sustainable approach

Manifattura Testori is committed to develop sustainable product characteristics, production and work environment



PRODUCT CHARACTERISTICS

- ▶ Traditional focus on durability of our textile collections
- ▶ REACH compliant raw materials and finishing
- ▶ Oekotex and GRS certified raw materials
- ▶ Curtain and seat fabrics with recycled and recyclable yarns



PRODUCTION

- ▶ 100% production selvages recycling
- ▶ Energy consumption reduction and water management
- ▶ Recycled product packaging



WORK ENVIRONMENT

- ▶ 57% women employees
- ▶ High workers retention

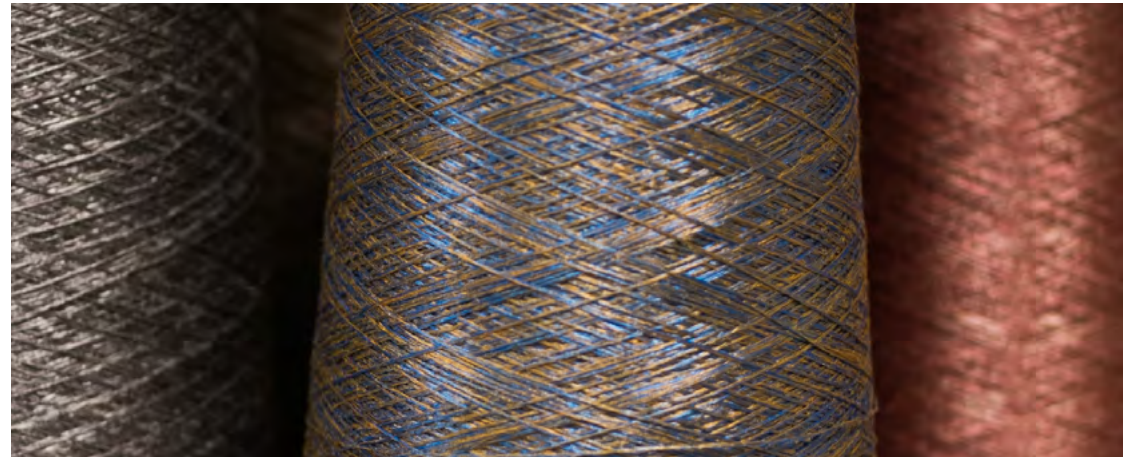
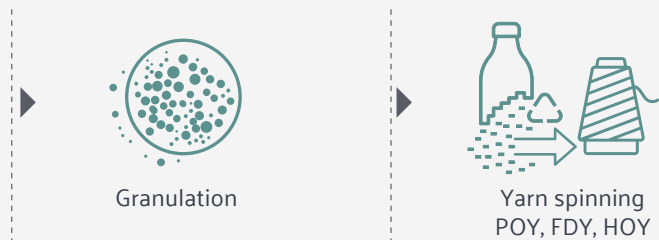
RECYCLED FR POLYESTER YARNS

Obtained from post-consumer recycled PET Bottles with optimal performance for a variety of applications

THIRD PART PROCESSING



PROCESSING



Our yarns reduce the environmental impact, here below follows the numbers:



60%

Energy saving



45%

Lower CO₂ emissions



90%

Water saving

RECYCLED WOOL YARNS

The process allows to give new life to fibers and create new yarns from pre and post consumer textile waste



Our yarns reduce the environmental impact, here below follows the numbers:



47%
Energy saving

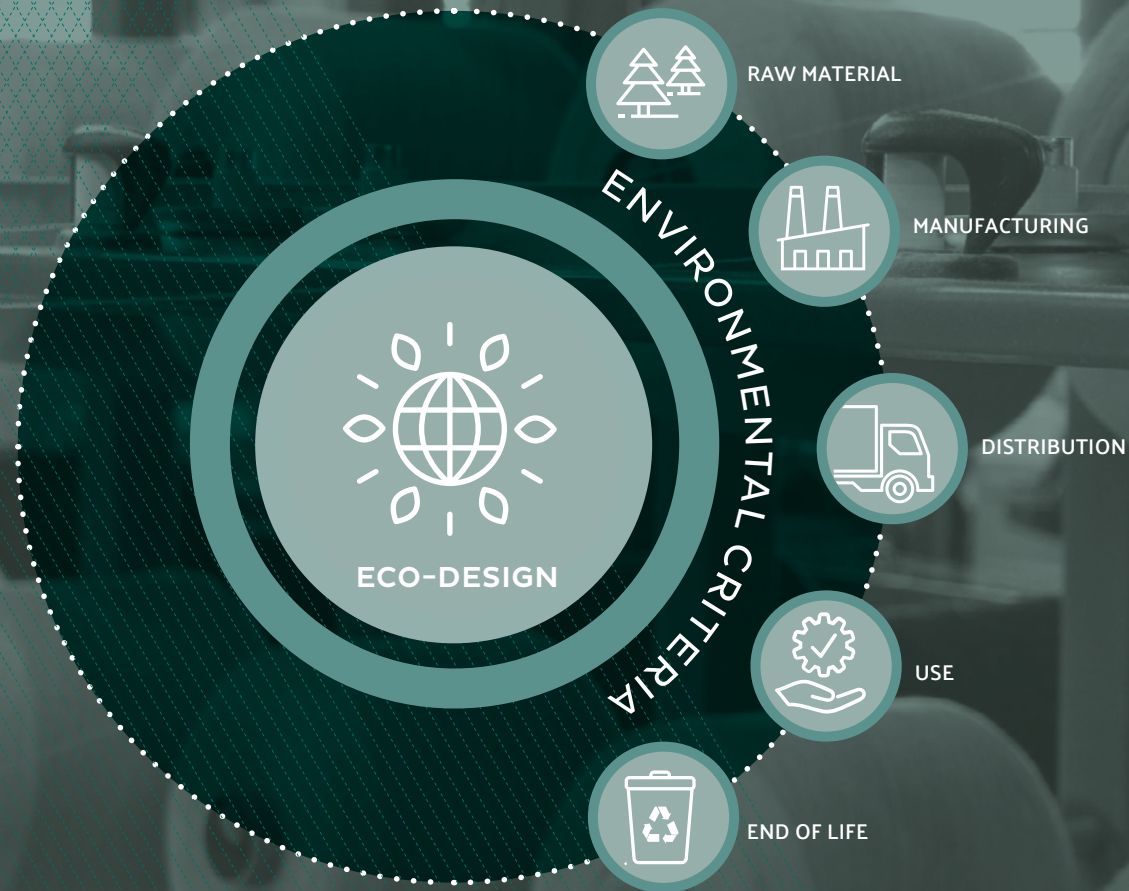


47%
Lower CO₂
emissions



61%
Water saving

Manifattura Testori cooperates with the Supply chain aiming to build an “Industry Partnership” following the principles of Eco-Design:



▶ Use of 100% recycled FR polyester fibers and sustainable dyings.

▶ 100% recycled FR polyester textiles become 100% recyclable products if the finished products sewing is made/ designed using the same raw materials (mono-material).

▶ 100% recycled material packaging and low impact transport.

▶ Low impact in installation and maintenance.

▶ Recycling of ready-made items (curtains and/or dress covers) converted into FR polyester padding.

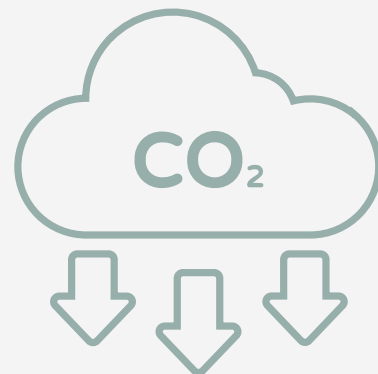
ENVIRONMENTAL IMPACT



Manifattura Testori has developed new materials (fibers and fabrics) with the aim of being more sustainable reducing the environmental impact.

BIO-BASED MATERIALS

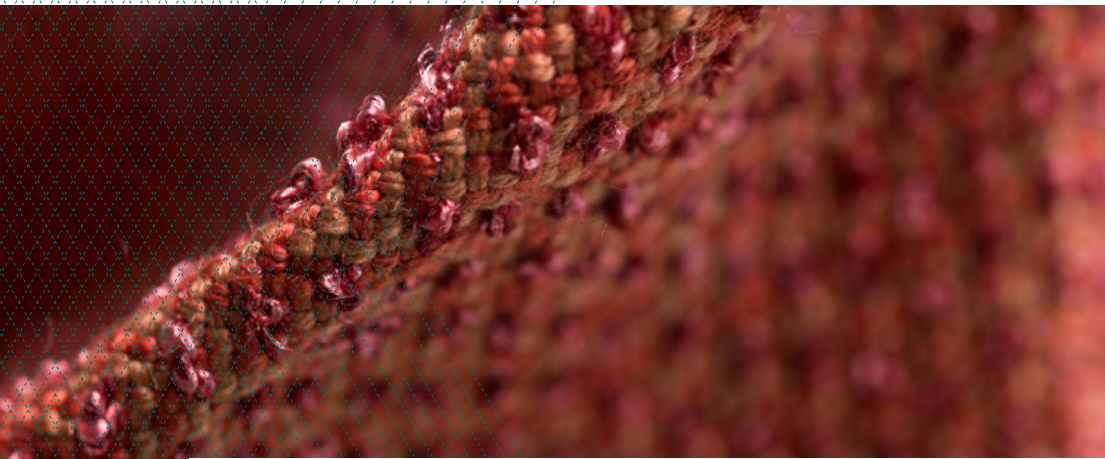
- ▶ We introduced the 30% of bio-based material into the composition of our FR polyester products.
- ▶ with the aim to reduce our carbon footprint with the switch to renewable sources.



NATURAL FIBERS

- ▶ We are developing new seating and curtain fabrics using natural fibers.
- ▶ with the same performances of FR polyester.





Our Certifications

Manifattura Testori Technological Laboratory, under our **UNI EN ISO 9001:2015** Quality System, issues **Official Certifications** in both development and supply phases.

It is equipped to perform the main physical-mechanical and chemical tests, such as **wear resistance, pilling propensity, tear strength and elongation, color fastness, stain repellency** and **antimicrobial** and **antiviral** (among others).

All our products are covered by the certifications of the current European Community technical specifications (**IMO Resolutions / M.E.D. Module “B”**) and are delivered with certification under the European Community Directive on ship equipment (**M.E.D. Module “D”**).



Eventually, our yarns and dyeing are certified GRS and OEKO-TEX.



MAIN CUSTOMERS



THANK YOU

Testori | 120°

FABRICS SINCE 1904

CONTACTS

Headquarter and Showroom:

Via Dante, 7
20026 Novate Milanese (MI) - Italy
T. +39 02 39101384
F. +39 02 39100510
sales@testori-manifattura.it

www.testori-manifattura.it