



MRO PROJECT

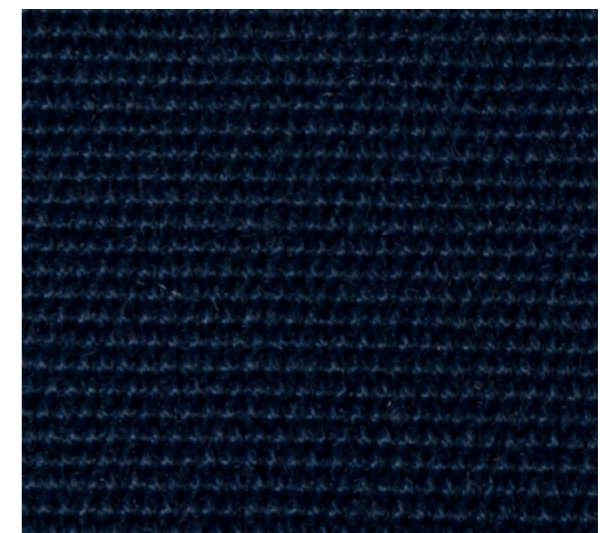
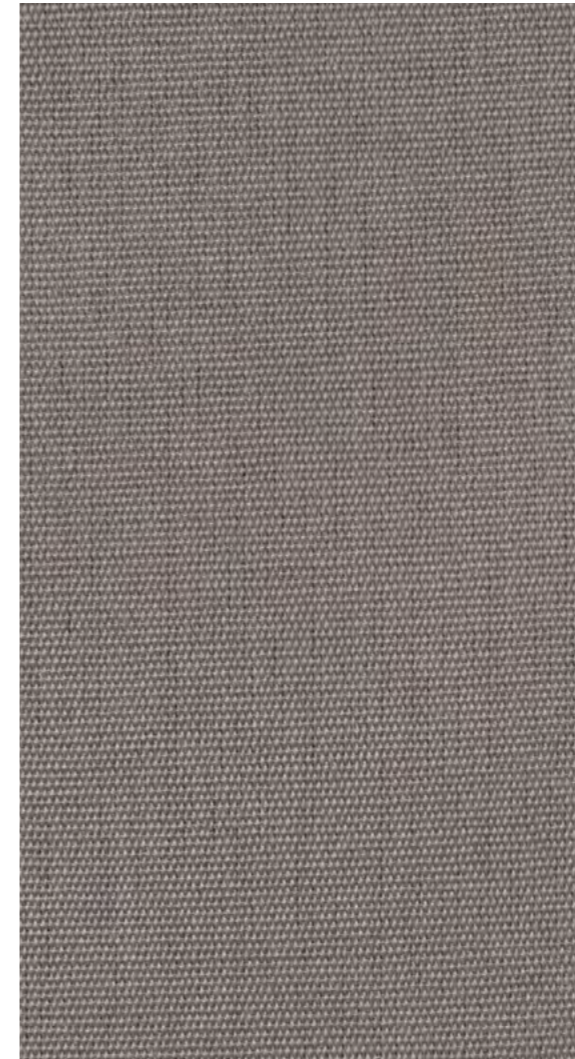
STOCK & FAST
DELIVERY PRODUCTS

Testori | 120°




FABRICS SINCE 1904

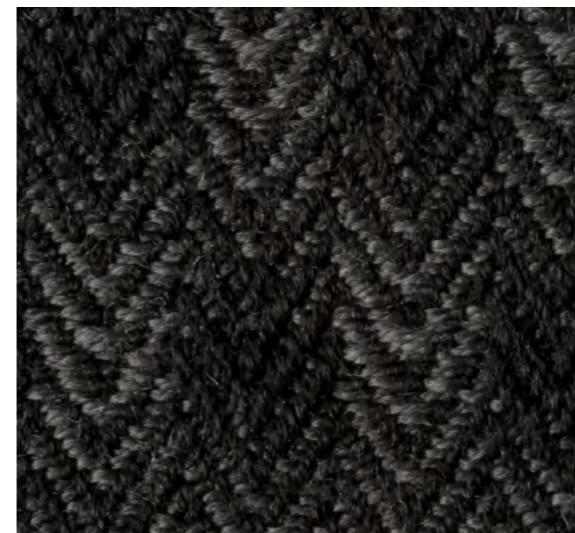
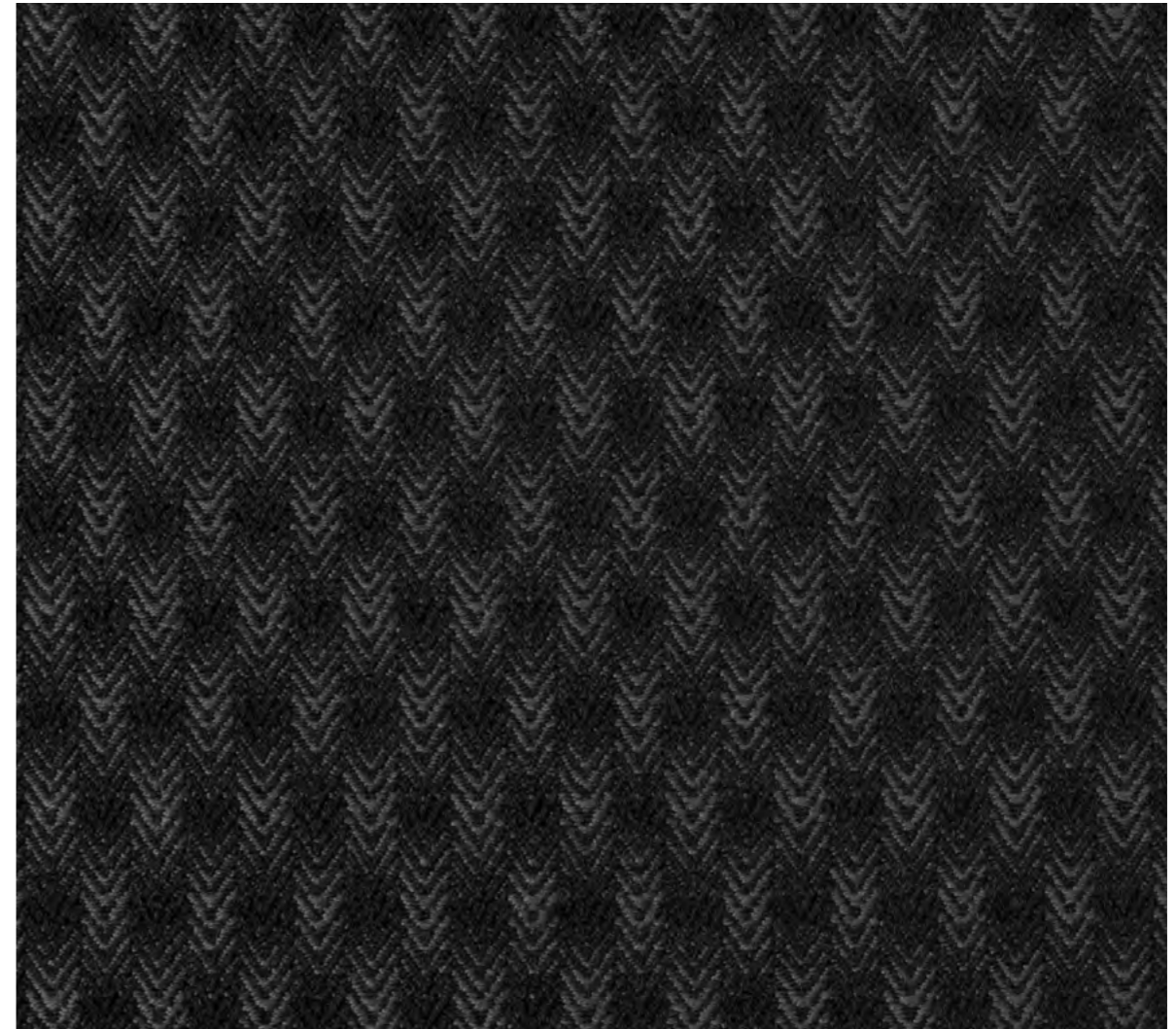
SCHEDA TECNICA / TECHNICAL DATA SHEET

CODICE ARTICOLO / P/N: 4746	TESSUTO PER TENDE CURTAIN FABRIC
Colore Cliente Custom colour	Colore vari Various colours
Composizione Composition	100% Poliestere Trevira FR 100% Polyester Trevira FR
Peso Weight	250 g/m2 ±5% grs 250 per sq.mt ±5%
Altezza rotolo Roll width	140 cm cms 140
Reazione al fuoco Flame resistance	Conforme a: Conforms to: FAR 25.853 (a) - Appendix F Part I (a)(1)(ii) EASA CS 25.853 (a) - Appendix F Part I (a)(1)(ii)
Densità e tossicità dei fumi Smoke emission and toxicity	Conforme a: Conforms to: Airbus ABD0031
Solidità del colore alla luce artificiale Color fastness to artificial light	Grado 6 scala dei blu Grade 6 blues cale UNI EN ISO 105-B02
Versione sostenibile Sustainable version	 Su richiesta On request
Versione riciclata Recycled version	 Su richiesta On request
Versione riciclabile Recyclable version	Su richiesta On request
Manutenzione Maintenance	Lavaggio a secco 30/40°C Dry cleaning at 30 to 40°C Asciugatura delicata Gentle drying in tumbler Stiratura con ferro a basse temperature Ironing at medium to low temperatures
Simboli Symbols	
Procedura di pulizia Cleaning procedure	Su richiesta On request
Emesso da / Issued by	Ufficio Tecnico / Engineering Department
Data / Date	Dicembre 2024 / December 2024







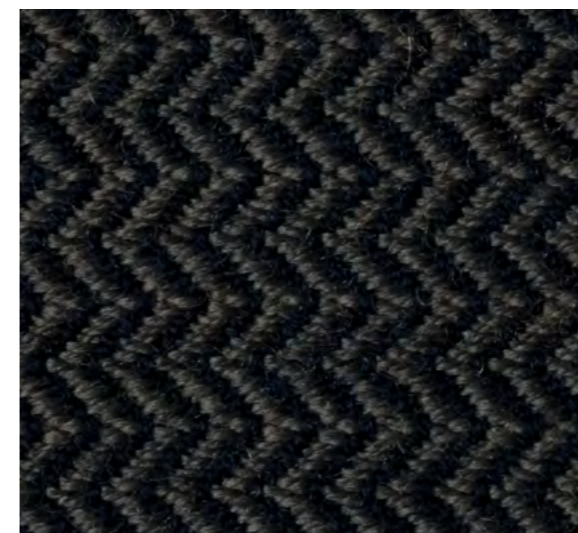
SCHEDA TECNICA / TECHNICAL DATA SHEET

CODICE ARTICOLO / P/N: 7825545	TESSUTO PER SEDUTE "LEVANTE" "LEVANTE" SEAT FABRIC
Colore Cliente / Custom colour	Grigio/Grigio scuro / Grey/Dark grey
Composizione Composition	93% Lana - 7% Poliammide 93% Wool - 7% Polyamide
Peso / Weight	400 g/m ² ±5% / grs 400 per sq.mt ±5%
Altezza rotolo / Roll width	140 cm / cms 140
Reazione al fuoco Flame resistance	Conforme a: / Conforms to: FAR 25.853 (a) - Appendix F Part I (a)(1)(ii) EASA CS 25.853 (a) - Appendix F Part I (a)(1)(ii)
Densità e tossicità dei fumi Smoke emission and toxicity	Conforme a: / Conforms to: Airbus ABD0031
Resistenza all'abrasione "Martindale" Wear resistance "Martindale"	>40.000 cicli >40,000 rubs UNI EN ISO 12947-2
Comportamento al Pilling Pilling propensity	Grado 5 dopo 5000 cicli Grade 5 after 5000 rubs UNI EN ISO 12945-2
Solidità del colore alla luce artificiale Color fastness to artificial light	Grado 6 scala dei blu Grade 6 blues cale UNI EN ISO 105-B02
Versione sostenibile Sustainable version	 Su richiesta On request
Versione riciclata Recycled version	 Su richiesta On request
Versione riciclabile Recyclable version	Su richiesta On request
Manutenzione Maintenance	Lavaggio a secco 30/40°C Dry cleaning at 30 to 40°C Asciugatura delicata Gentle drying in tumbler Stiratura con ferro a basse temperature Ironing at medium to low temperatures
Simboli Symbols	
Procedura di pulizia Cleaning procedure	Su richiesta On request
Emesso da / Issued by	Ufficio Tecnico / Engineering Department
Data / Date	Dicembre 2024 / December 2024






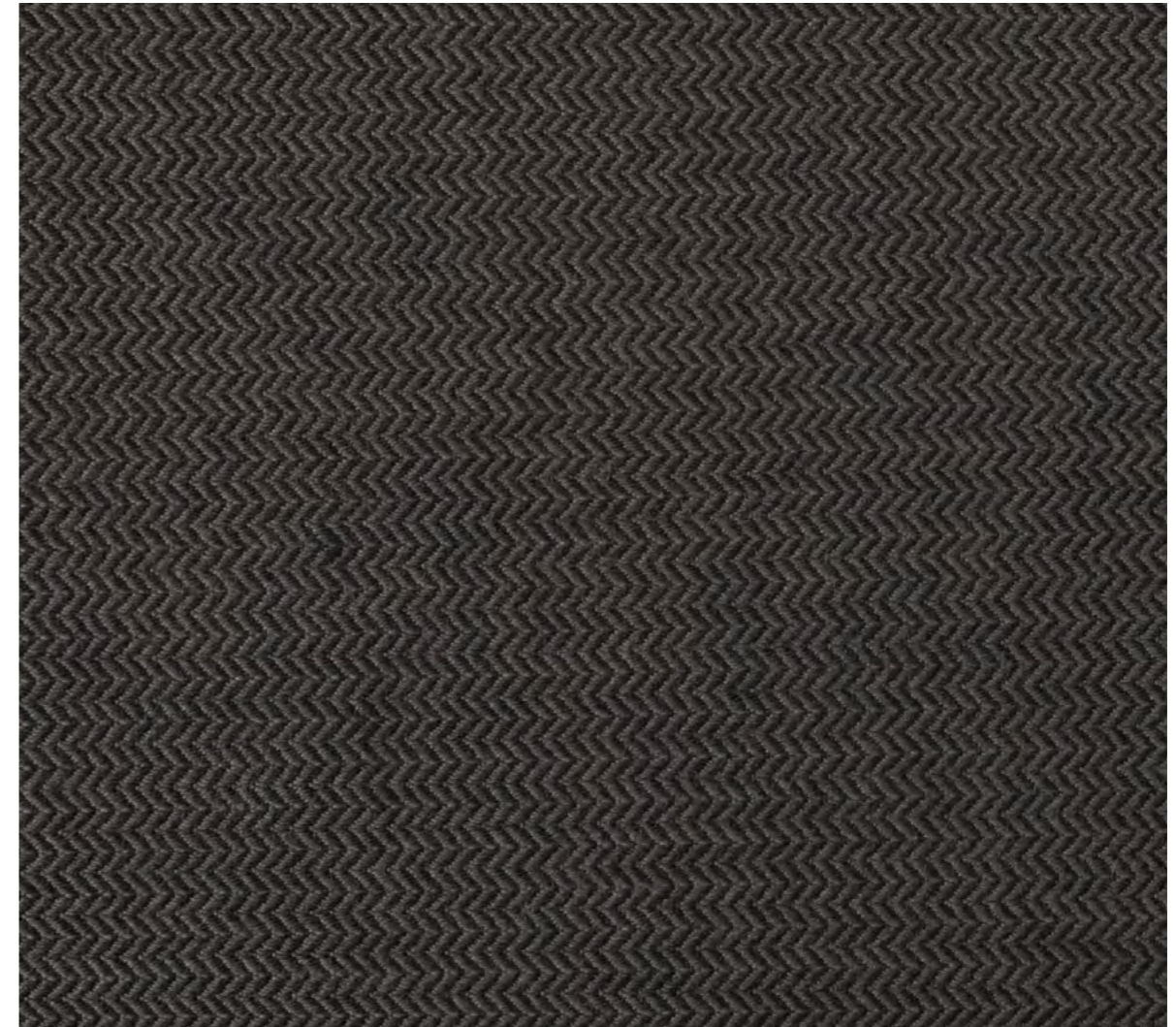
SCHEMA TECNICA / TECHNICAL DATA SHEET

CODICE ARTICOLO / P/N: 7732139	TESSUTO PER SEDUTE "PRET-A-PORTER" "PRET-A-PORTER" SEAT FABRIC
Colore Cliente / Custom colour	Grigio/Blu scuro / Grey/Dark blue
Composizione Composition	93% Lana - 7% Poliammide 93% Wool - 7% Polyamide
Peso / Weight	440 g/m ² ±5% / grs 440 per sq.mt ±5%
Altezza rotolo / Roll width	140 cm / cms 140
Reazione al fuoco Flame resistance	Conforme a: / Conforms to: FAR 25.853 (a) - Appendix F Part I (a)(1)(ii) EASA CS 25.853 (a) - Appendix F Part I (a)(1)(ii)
Densità e tossicità dei fumi Smoke emission and toxicity	Conforme a: / Conforms to: Airbus ABD0031
Resistenza all'abrasione "Martindale" Wear resistance "Martindale"	>45.000 cicli >45,000 rubs UNI EN ISO 12947-2
Comportamento al Pilling Pilling propensity	Grado 5 dopo 5000 cicli Grade 5 after 5000 rubs UNI EN ISO 12945-2
Solidità del colore alla luce artificiale Color fastness to artificial light	Grado 6 scala dei blu Grade 6 blues cale UNI EN ISO 105-B02
Versione sostenibile Sustainable version	 Su richiesta On request
Versione riciclata Recycled version	 Su richiesta On request
Versione riciclabile Recyclable version	Su richiesta On request
Manutenzione Maintenance	Lavaggio a secco 30/40°C Dry cleaning at 30 to 40°C Asciugatura delicata Gentle drying in tumbler Stiratura con ferro a basse temperature Ironing at medium to low temperatures
Simboli Symbols	  
Procedura di pulizia Cleaning procedure	Su richiesta On request
Emesso da / Issued by	Ufficio Tecnico / Engineering Department
Data / Date	Dicembre 2024 / December 2024








SCHEMA TECNICA / TECHNICAL DATA SHEET

CODICE ARTICOLO / P/N: 7732145	TESSUTO PER SEDUTE "PRET-A-PORTER" "PRET-A-PORTER" SEAT FABRIC
Colore Cliente / Custom colour	Grigio/Grigio scuro / Grey/Dark grey
Composizione Composition	93% Lana - 7% Poliammide 93% Wool - 7% Polyamide
Peso / Weight	440 g/m ² ±5% / grs 440 per sq.mt ±5%
Altezza rotolo / Roll width	140 cm / cms 140
Reazione al fuoco Flame resistance	Conforme a: / Conforms to: FAR 25.853 (a) - Appendix F Part I (a)(1)(ii) EASA CS 25.853 (a) - Appendix F Part I (a)(1)(ii)
Densità e tossicità dei fumi Smoke emission and toxicity	Conforme a: / Conforms to: Airbus ABD0031
Resistenza all'abrasione "Martindale" Wear resistance "Martindale"	>45.000 cicli >45,000 rubs UNI EN ISO 12947-2
Comportamento al Pilling Pilling propensity	Grado 5 dopo 5000 cicli Grade 5 after 5000 rubs UNI EN ISO 12945-2
Solidità del colore alla luce artificiale Color fastness to artificial light	Grado 6 scala dei blu Grade 6 blues cale UNI EN ISO 105-B02
Versione sostenibile Sustainable version	 Su richiesta On request
Versione riciclata Recycled version	 Su richiesta On request
Versione riciclabile Recyclable version	Su richiesta On request
Manutenzione Maintenance	Lavaggio a secco 30/40°C Dry cleaning at 30 to 40°C Asciugatura delicata Gentle drying in tumbler Stiratura con ferro a basse temperature Ironing at medium to low temperatures
Simboli Symbols	
Procedura di pulizia Cleaning procedure	Su richiesta On request
Emesso da / Issued by	Ufficio Tecnico / Engineering Department
Data / Date	Dicembre 2024 / December 2024






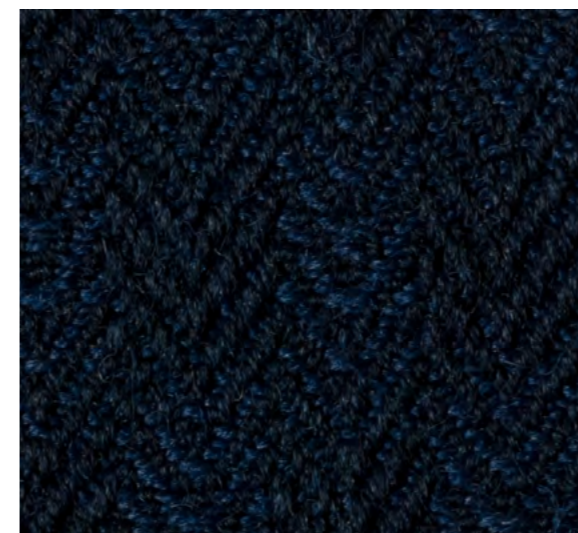
SCHEDA TECNICA / TECHNICAL DATA SHEET

CODICE ARTICOLO / P/N: 6346139	TESSUTO PER SEDUTE SEAT FABRIC
Colore Cliente / Custom colour	Blu scuro / Dark blue
Composizione Composition	93% Lana - 7% Poliammide 93% Wool - 7% Polyamide
Peso / Weight	410 g/m ² ±5% / grs 410 per sq.mt ±5%
Altezza rotolo / Roll width	140 cm / cms 140
Reazione al fuoco Flame resistance	Conforme a: / Conforms to: FAR 25.853 (a) - Appendix F Part I (a)(1)(ii) EASA CS 25.853 (a) - Appendix F Part I (a)(1)(ii)
Densità e tossicità dei fumi Smoke emission and toxicity	Conforme a: / Conforms to: Airbus ABD0031
Resistenza all'abrasione "Martindale" Wear resistance "Martindale"	>65.000 cicli >65,000 rubs UNI EN ISO 12947-2
Comportamento al Pilling Pilling propensity	Grado 5 dopo 5000 cicli Grade 5 after 5000 rubs UNI EN ISO 12945-2
Solidità del colore alla luce artificiale Color fastness to artificial light	Grado 6 scala dei blu Grade 6 blues cale UNI EN ISO 105-B02
Versione sostenibile Sustainable version	 Su richiesta On request
Versione riciclata Recycled version	 Su richiesta On request
Versione riciclabile Recyclable version	Su richiesta On request
Manutenzione Maintenance	Lavaggio a secco 30/40°C Dry cleaning at 30 to 40°C Asciugatura delicata Gentle drying in tumbler Stiratura con ferro a basse temperature Ironing at medium to low temperatures
Simboli Symbols	  
Procedura di pulizia Cleaning procedure	Su richiesta On request
Emesso da / Issued by	Ufficio Tecnico / Engineering Department
Data / Date	Dicembre 2024 / December 2024




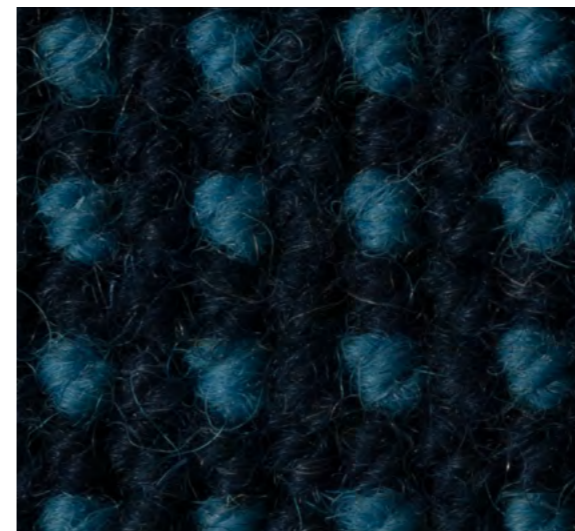
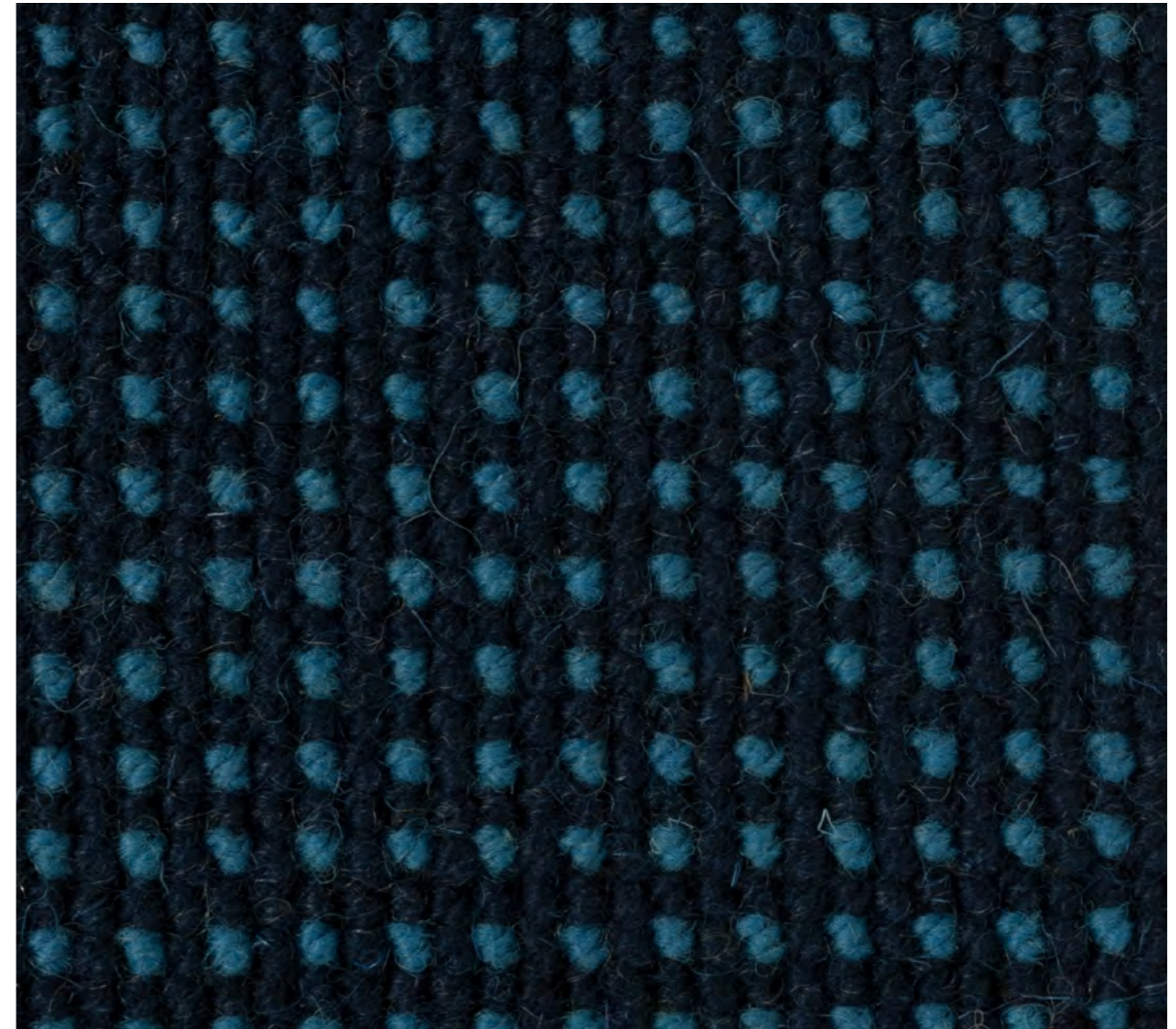
SCHEMA TECNICA / TECHNICAL DATA SHEET

CODICE ARTICOLO / P/N: 7825539	TESSUTO PER SEDUTE "LEVANTE" "LEVANTE" SEAT FABRIC
Colore Cliente / Custom colour	Blu scuro / Dark blue
Composizione Composition	93% Lana - 7% Poliammide 93% Wool - 7% Polyamide
Peso / Weight	400 g/m ² ±5% 7 grs 400 per sq.mt ±5%
Altezza rotolo / Roll width	140 cm / cms 140
Reazione al fuoco Flame resistance	Conforme a: / Conforms to: FAR 25.853 (a) - Appendix F Part I (a)(1)(ii) EASA CS 25.853 (a) - Appendix F Part I (a)(1)(ii)
Densità e tossicità dei fumi Smoke emission and toxicity	Conforme a: / Conforms to: Airbus ABD0031
Resistenza all'abrasione "Martindale" Wear resistance "Martindale"	>40.000 cicli >40,000 rubs UNI EN ISO 12947-2
Comportamento al Pilling Pilling propensity	Grado 5 dopo 5000 cicli Grade 5 after 5000 rubs UNI EN ISO 12945-2
Solidità del colore alla luce artificiale Color fastness to artificial light	Grado 6 scala dei blu Grade 6 blues cale UNI EN ISO 105-B02
Versione sostenibile Sustainable version	 Su richiesta On request
Versione riciclata Recycled version	 Su richiesta On request
Versione riciclabile Recyclable version	Su richiesta On request
Manutenzione Maintenance	Lavaggio a secco 30/40°C Dry cleaning at 30 to 40°C Asciugatura delicata Gentle drying in tumbler Stiratura con ferro a basse temperature Ironing at medium to low temperatures
Simboli Symbols	
Procedura di pulizia Cleaning procedure	Su richiesta On request
Emesso da / Issued by	Ufficio Tecnico / Engineering Department
Data / Date	Dicembre 2024 / December 2024




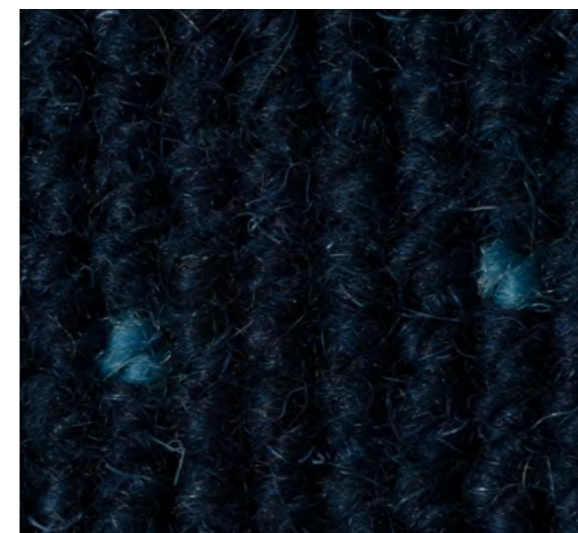
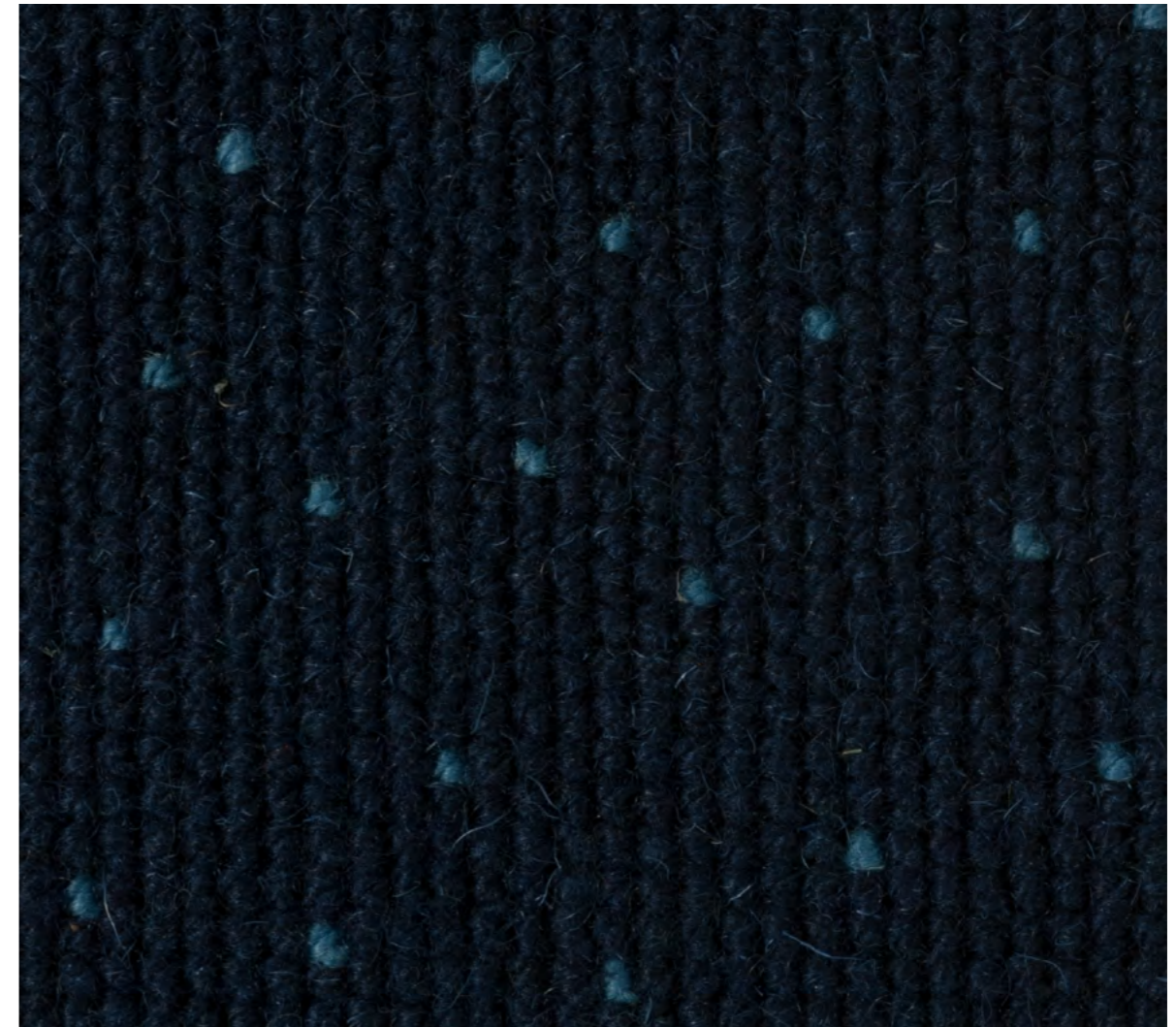
SCHEMA TECNICA / TECHNICAL DATA SHEET

CODICE ARTICOLO / P/N: 1583139	TAPPETO CARPET
Colore Colour	Blu scuro con puntini colore azzurro Dark blue with blue light dots
Composizione Composition	80% Lana – 20% Poliammide / Fibra antistatica 80% Wool – 20% Polyamide / Antistatic fiber
Peso Weight	1.600 g/m ² ±5% grs 1,600 per sq.mt ±5%
Spessore Thickness	4 mm
Altezza rotolo Roll width	200 cm cms 200
Reazione al fuoco Flame resistance	Conforme a: / Conforms to: EASA CS 25.853 (a) – App. F, Part I (a)(1)(ii)
Densità e tossicità dei fumi Smoke emission and toxicity	Conforme a: / Conforms to: Airbus ABD0031
Manutenzione Maintenance	Lavaggio a secco 30/40°C Dry cleaning at 30 to 40°C
Simboli Symbols	
Procedura di pulizia Cleaning procedure	Su richiesta On request
Emesso da Issued by	Ufficio Tecnico Engineering Department
Data Date	Dicembre 2024 December 2024




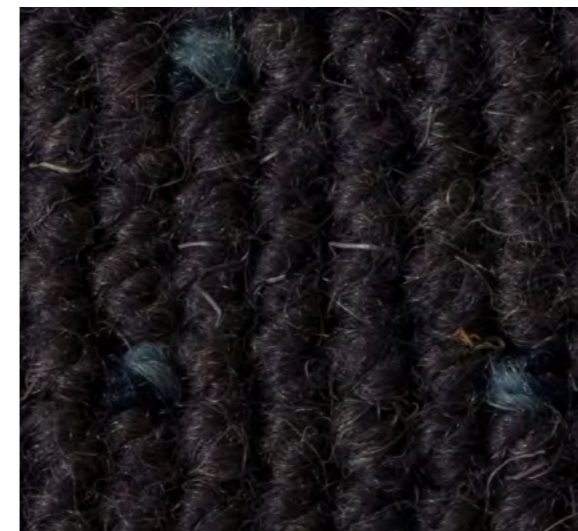
SCHEMA TECNICA / TECHNICAL DATA SHEET

CODICE ARTICOLO / P/N: 1587239	TAPPETO CARPET
Colore Colour	Blu scuro con puntini colore azzurro Dark blue with blue light dots
Composizione Composition	80% Lana – 20% Poliammide / Fibra antistatica 80% Wool – 20% Polyamide / Antistatic fiber
Peso Weight	1.600 g/m ² ±5% grs 1,600 per sq.mt ±5%
Spessore Thickness	4,5 mm
Altezza rotolo Roll width	200 cm cms 200
Reazione al fuoco Flame resistance	Conforme a: / Conforms to: EASA CS 25.853 (a) – App. F, Part I (a)(1)(ii)
Densità e tossicità dei fumi Smoke emission and toxicity	Conforme a: / Conforms to: Airbus ABD0031
Manutenzione Maintenance	Lavaggio a secco 30/40°C Dry cleaning at 30 to 40°C
Simboli Symbols	
Procedura di pulizia Cleaning procedure	Su richiesta On request
Emesso da Issued by	Ufficio Tecnico Engineering Department
Data Date	Dicembre 2024 December 2024




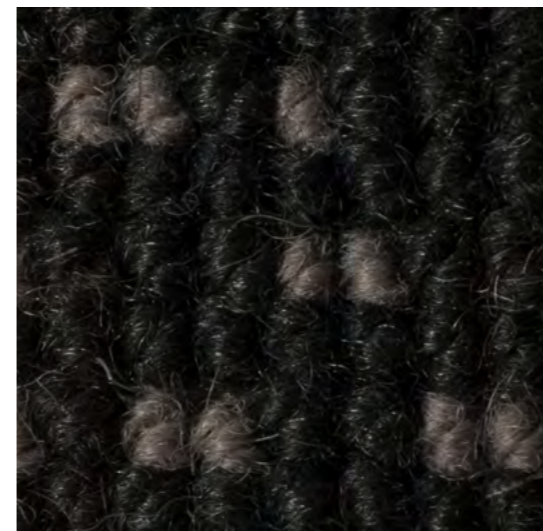
SCHEMA TECNICA / TECHNICAL DATA SHEET

CODICE ARTICOLO / P/N: 1586112	TAPPETO CARPET
Colore Colour	Grigio scuro con puntini Dark grey with dots
Composizione Composition	80% Nuova lana vergine - 20% Poliammide Fibra antistatica 80% New virgin wool - 20% Polyamide Antistatic fiber
Peso Weight	1.600 g/m ² ±5% grs 1,600 per sq.mt ±5%
Spessore Thickness	4,5 mm
Altezza rotolo Roll width	200 cm cms 200
Reazione al fuoco Flame resistance	Conforme a: / Conforms to: EASA CS 25.853 (a) - App. F, Part I (a)(1)(ii)
Densità e tossicità dei fumi Smoke emission and toxicity	Conforme a: / Conforms to: Airbus ABD0031
Manutenzione Maintenance	Lavaggio a secco 30/40°C Dry cleaning at 30 to 40°C
Simboli Symbols	
Procedura di pulizia Cleaning procedure	Su richiesta On request
Emesso da Issued by	Ufficio Tecnico Engineering Department
Data Date	Dicembre 2024 December 2024






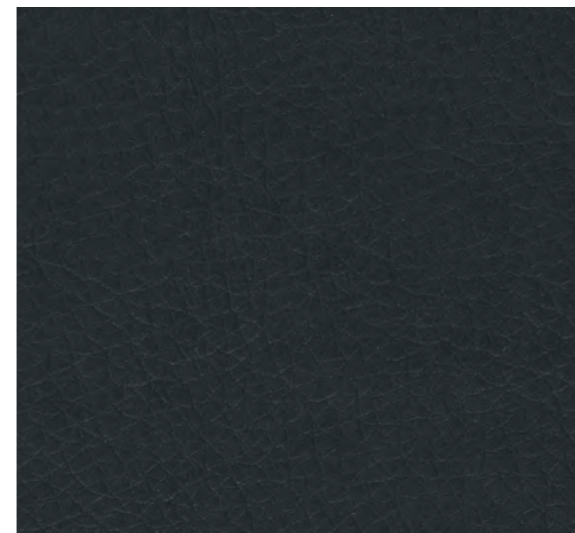
SCHEMA TECNICA / TECHNICAL DATA SHEET

CODICE ARTICOLO / P/N: 1573401	TAPPETO CARPET
Colore Colour	Grigio scuro / Grigio chiaro Dark grey / Light grey
Composizione Composition	80% Lana - 20% Poliammide / Fibra antistatica 80% Wool - 20% Polyamide / Antistatic fiber
Peso Weight	1.500 g/m ² ±5% grs 1,500 per sq.mt ±5%
Spessore Thickness	4 mm
Altezza rotolo Roll width	200 cm cms 200
Reazione al fuoco Flame resistance	Conforme a: / Conforms to: EASA CS 25.853 (a) - App. F, Part I (a)(1)(ii)
Densità e tossicità dei fumi Smoke emission and toxicity	Conforme a: / Conforms to: Airbus ABD0031
Manutenzione Maintenance	Lavaggio a secco 30/40°C Dry cleaning at 30 to 40°C
Simboli Symbols	
Procedura di pulizia Cleaning procedure	Su richiesta On request
Emesso da Issued by	Ufficio Tecnico Engineering Department
Data Date	Dicembre 2024 December 2024






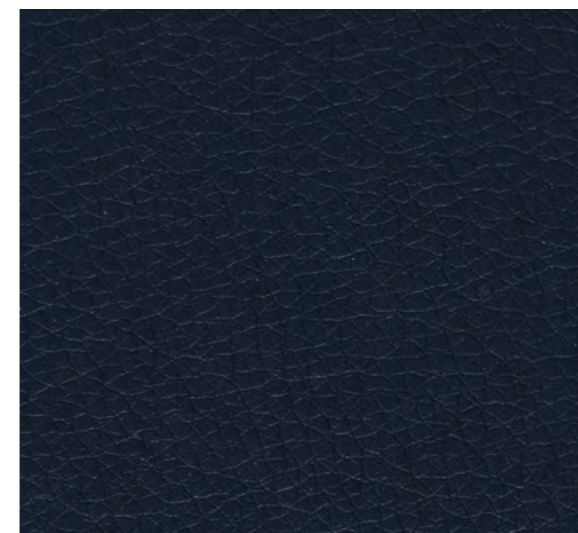
SCHEMA TECNICA / TECHNICAL DATA SHEET

CODICE ARTICOLO / P/N: 9430792	FINTA PELLE SYNTHETIC LEATHER
Colore Cliente / Custom colour	Grigio scuro/Dark grey
Composizione Composition	51% Poliuretano – 49% Poliestere 51% Polyurethane – 49% Polyester
Peso / Weight	555 g/m ² ±5% / grs 555 per sq.mt ±5%
Altezza rotolo / Roll width	140 cm / cms 140
Spessore /Thickness	1,10 mm
Reazione al fuoco Flame resistance	Conforme a: Conforms to: FAR 25.853 Appendix F Part I (a)(1)(ii) EASA CS 25.853 Appendix F Part I (a)(1)(ii)
Densità e tossicità dei fumi Smoke emission and toxicity	Conforme a: Conforms to: Airbus ABD0031
Resistenza all'abrasione "Martindale" Wear resistance "Martindale"	≥ 120.000 cicli / ≥ 120,000 rubs UNI EN ISO 5470
Solidità del colore alla luce artificiale Color fastness to artificial light	Grado 6 scala dei blu / Grade 6 blue scale UNI EN ISO 105-B02
Resistenza idrolisi "Jungle Test" Hidrolisis resistance "Jungle Test"	> 5 settimane / > 5 weeks ISO 1419
Versione sostenibile Sustainable version	 Su richiesta On request
Versione riciclata Recycled version	 Su richiesta On request
Manutenzione Maintenance	Non usare prodotti aggressivi Do not use aggressive products Il prodotto non sopporta trattamento con cloro Do not treat with chlorine Non lavare a secco / Do not dry clean Non asciugare in macchina asciugatrice Do not tumble dry Non stirare / Do not iron
Simboli Symbols	
Metodo di smacchiatura Stain removal method	Rimuovere le macchie tamponando con un panno di cotone umido e sapone liquido neutro Remove stains by dabbing with a damp cotton cloth and neutral liquid soap
Procedura di pulizia / Cleaning procedure	Su richiesta / On request
Emesso da / Issued by	Ufficio Tecnico / Engineering Department
Data / Date	Novembre 2024 /November 2024



SCHEMA TECNICA / TECHNICAL DATA SHEET

CODICE ARTICOLO / P/N: 9430059	FINTA PELLE SYNTHETIC LEATHER
Colore Cliente / Custom colour	Blu scuro/Dark blue
Composizione Composition	51% Poliuretano – 49% Poliestere 51% Polyurethane – 49% Polyester
Peso / Weight	555 g/m ² ±5% / grs 555 per sq.mt ±5%
Altezza rotolo / Roll width	140 cm / cms 140
Spessore /Thickness	1,10 mm
Reazione al fuoco Flame resistance	Conforme a: Conforms to: FAR 25.853 Appendix F Part I (a)(1)(ii) EASA CS 25.853 Appendix F Part I (a)(1)(ii)
Densità e tossicità dei fumi Smoke emission and toxicity	Conforme a: Conforms to: Airbus ABD0031
Resistenza all'abrasione "Martindale" Wear resistance "Martindale"	≥ 120.000 cicli / ≥ 120,000 rubs UNI EN ISO 5470
Solidità del colore alla luce artificiale Color fastness to artificial light	Grado 6 scala dei blu / Grade 6 blue scale UNI EN ISO 105-B02
Resistenza idrolisi "Jungle Test" Hidrolisis resistance "Jungle Test"	> 5 settimane / > 5 weeks ISO 1419
Versione sostenibile Sustainable version	 Su richiesta On request
Versione riciclata Recycled version	 Su richiesta On request
Manutenzione Maintenance	Non usare prodotti aggressivi Do not use aggressive products Il prodotto non sopporta trattamento con cloro Do not treat with chlorine Non lavare a secco / Do not dry clean Non asciugare in macchina asciugatrice Do not tumble dry Non stirare / Do not iron
Simboli Symbols	
Metodo di smacchiatura Stain removal method	Rimuovere le macchie tamponando con un panno di cotone umido e sapone liquido neutro Remove stains by dabbing with a damp cotton cloth and neutral liquid soap
Procedura di pulizia / Cleaning procedure	Su richiesta / On request
Emesso da / Issued by	Ufficio Tecnico / Engineering Department
Data / Date	Novembre 2024 /November 2024





Testori | 120°

FABRICS SINCE 1904

CONTACTS

HEADQUARTER AND SHOWROOM:

Manifattura A. Testori di G. Spa

Via Dante, 7

20026 Novate Milanese, Italy

T. +39 02 39101384

uffcom@testori-manifattura.it

sales@testori-manifattura.it

www.testori-manifattura.it